



MELANIE ANDERSON
Independent Estate Agents POWERED BY **exp** UK

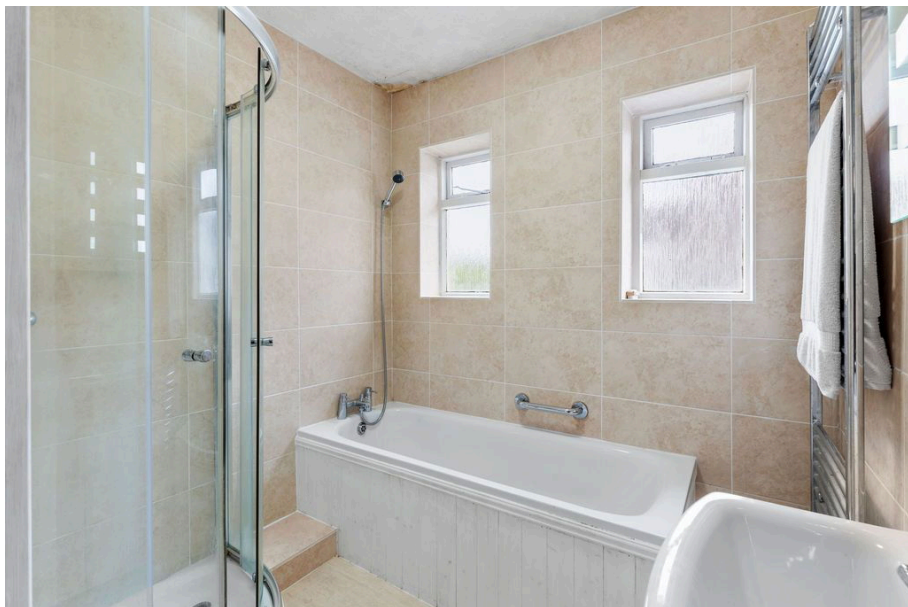
Slade Road, Newton, Swansea, SA3 4UF

Offers Over £600,000

🛏️ 4 🚿 1 🚗 2



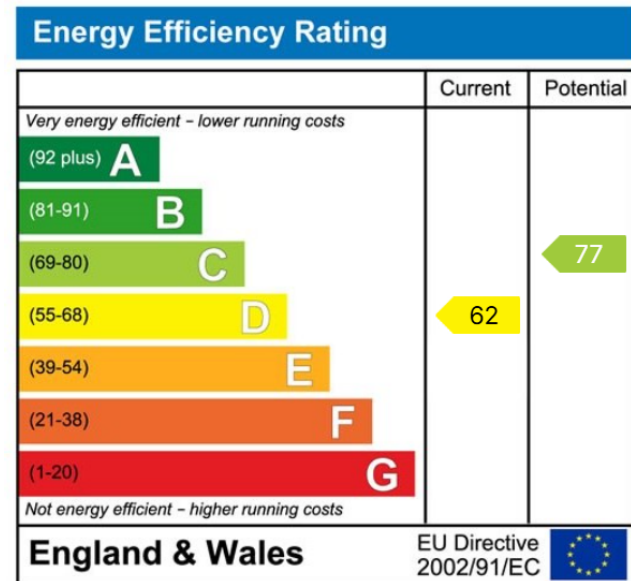
- Substantial Four Bedroom Detached Property
- Two Reception Rooms
- Ample Driveway Parking & Double Garage
- Newton Primary & Bishopston Comprehensive Catchment Area
- Ideal Family Home
- Two Attic Rooms
- Utility Room & G/F W.C
- Front & Rear Gardens
- In Need of General Updating, Offering Plenty of Potential
- Sought After Location Nearby Mumbles Village & Gower Peninsular



Substantial detached property situated in an extremely desirable location in Newton. Benefiting from four bedrooms, two attic rooms, two reception rooms, ground floor w/c and a utility room. The property is in need of general updating throughout, offering plenty of potential. Further benefiting from a double garage, front and rear gardens and ample off road parking. Set within a stones throw from popular Newton Primary and within catchment area for the highly regarded Bishopston Comprehensive School. Just a short stroll into the seaside village of Mumbles which offers an array of boutique shops, cafes and restaurants. Ideal family home. Viewing comes highly recommended.



TOTAL FLOOR AREA: 2209 sq.ft. (205.2 sq.m.) approx.
 Whilst every attempt has been made to ensure the accuracy of the floorplan contained here, measurements of doors, windows, rooms and any other items are approximate and no responsibility is taken for any error, omission or mis-statement. This plan is for illustrative purposes only and should be used as a guide only for any prospective purchaser. The services, systems and appliances shown have not been tested and no guarantee as to their operability or efficiency can be given.
 Made with Metrepro ©2024



01792 805075

Swansea, Mumbles & Cower

sales@melanieanderson.co.uk